

Slide Switches

Microminiature slide switches •



DISTINCTIVE FEATURES

- Ultra compact size
- Low profile
- Molded-in or epoxy sealed terminals
- Washing not recommended



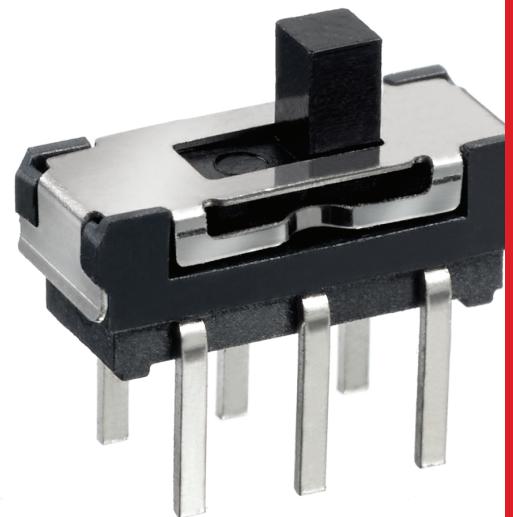
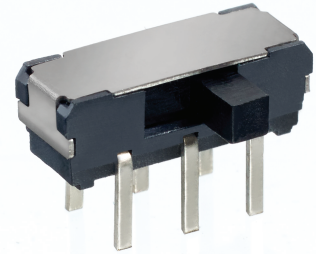
ENVIRONMENTAL SPECIFICATIONS

- Operating Temperature: -10 °C to +60 °C (14 °F to +140 °F)
- Storage Temperature: -30 °C to +80 °C (-22 °F to +176 °F) for 96 hours
- Solder heat resistance: 260°C (500 °F) max for 5 seconds



ELECTRICAL SPECIFICATIONS

- Contact rating: 100 mA 12VDC
- Contact Resistance: 20 Ω max.
- Insulation Resistance: 100 M Ω min. at 500VDC
- Electrical life: 10,000 cycles min.



Slide switch series

Microminiature slide switches • MHSS SERIES

SPECIFICATION

Contact rating: 300 mA at 6 VDC
 Initial contact resistance: 60 milliohms max.
 Insulation resistance: 100 megohms min. at 100 VDC
 Dielectric strength: 100 volts RMS at sea level
 Electrical life: 5,000 cycles min.
 Operating temperature range: -20°C to +70°C
 Solder heat resistance: 350°C max. for 3 seconds
 Washing not recommended

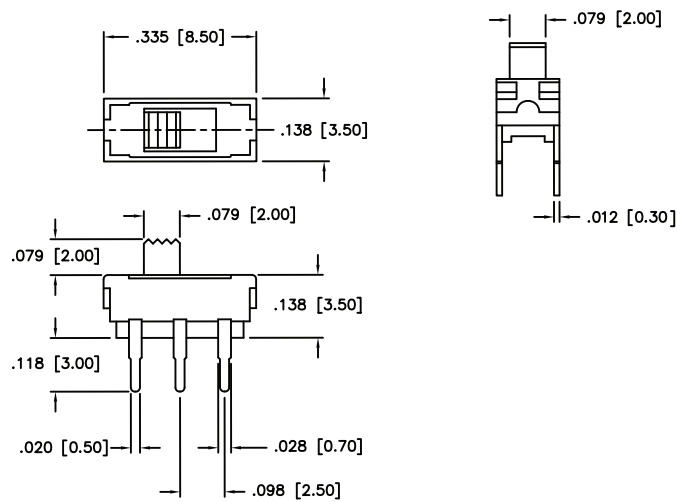
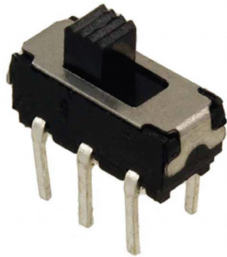
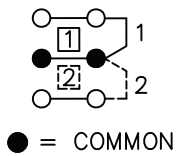
FEATURES

- Excellent tactile feedback (detent action)
- Molded-in terminals minimize flux or solder entry
- Ultra compact case size
- Low Profile

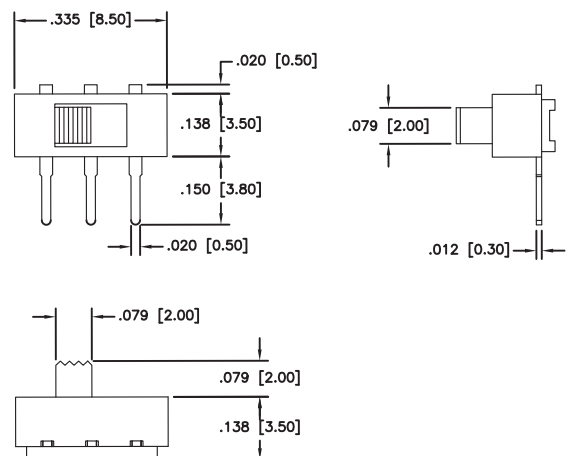
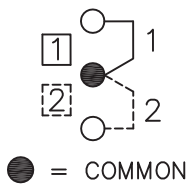
MATERIALS

Contacts & terminals: Silver plated
 Case: 30% Glass filled nylon, type 6/6, black
 Actuator: Nylon, type 6/6, black

MHSS1104



MHSS1105



Slide switch series

Microminiature slide switches • MS SERIES

SPECIFICATION

Contact rating: 300 mA at 6 VDC
 Initial contact resistance: 70 milliohms max.
 Insulation resistance: 100 megohms min. at 500 VDC
 Dielectric strength: 500 volts RMS at sea level
 Electrical life: 10,000 cycles min.
 Operating temperature range: -10°C to +60°C
 Solder heat resistance: 260°C max. for 3 seconds
 Washing not recommended

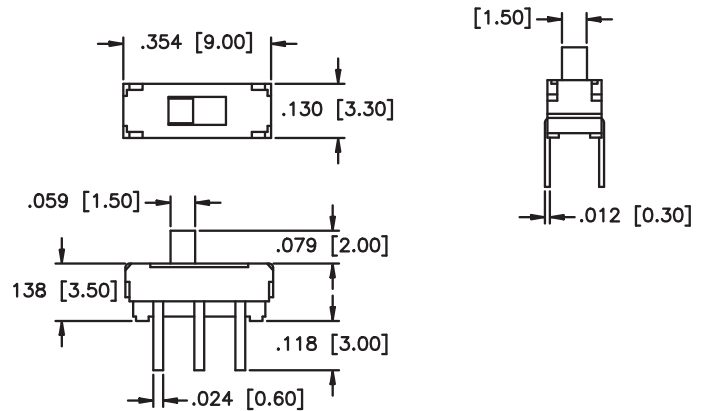
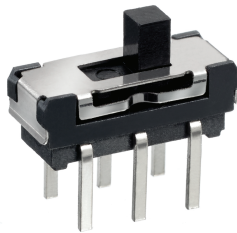
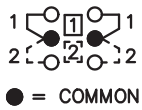
FEATURES

- Low profile
- Insert molded terminals
- Stainless steel cover

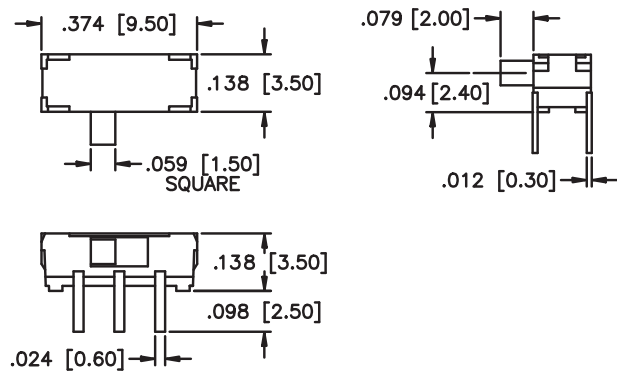
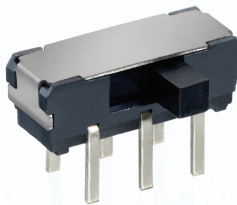
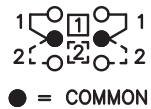
MATERIALS

Contacts & terminals: Silver plated
 Cover: Stainless steel
 Actuator: Thermoplastic
 Base: High temperature thermoplastic
 Terminal seal: Insert molded

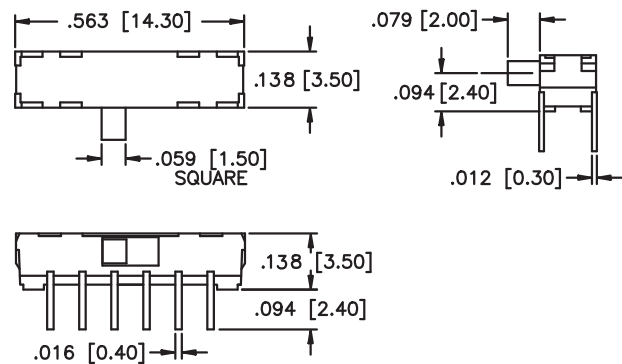
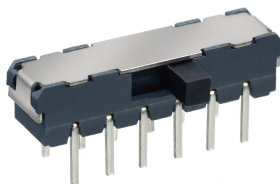
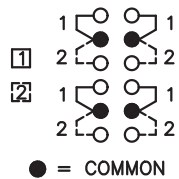
MS22



MS22R



MS42R



Slide switch series

Microminiature slide switches • MMS SERIES

SPECIFICATION

Contact rating: 300 mA at 30 VDC
 Initial contact resistance: 25 milliohms max.
 Insulation resistance: 100 megohms min. at 500 VDC
 Dielectric strength: 500 volts RMS for 1 minute
 Electrical life: 10,000 cycles min.
 Operating temperature range: -20°C to +70°C
 Solder heat resistance: 255°C max. for 5 seconds
 Washing not recommended

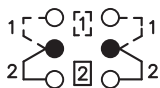
FEATURES

- Bifurcated wiping contact design
- Low profile
- Epoxy sealed terminals

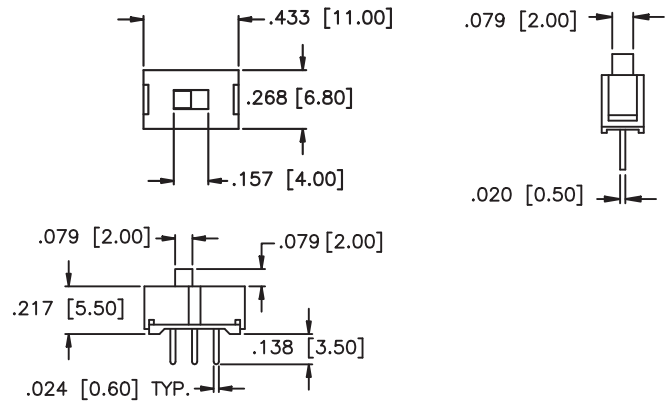
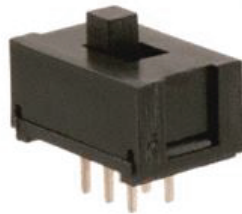
MATERIALS

Contacts & terminals: Silver plated
 Case: Polyacetal
 Actuator: PBT
 Base: Glass filled PBT
 Terminal seal: Epoxy or phenol resin

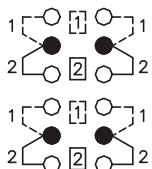
MMS2214



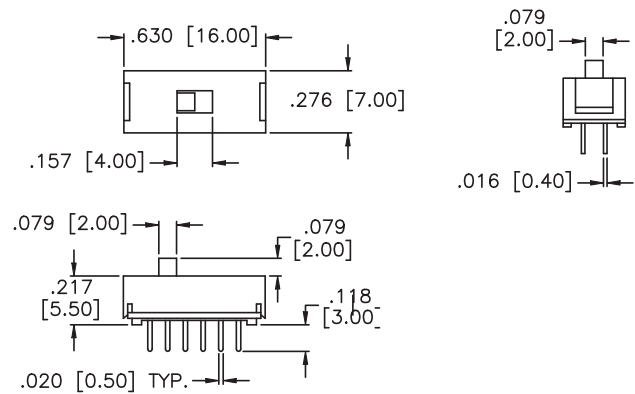
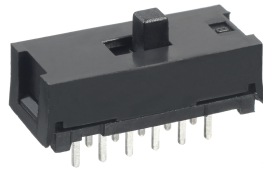
● = COMMON



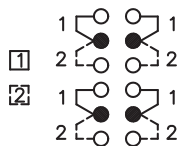
MMS42



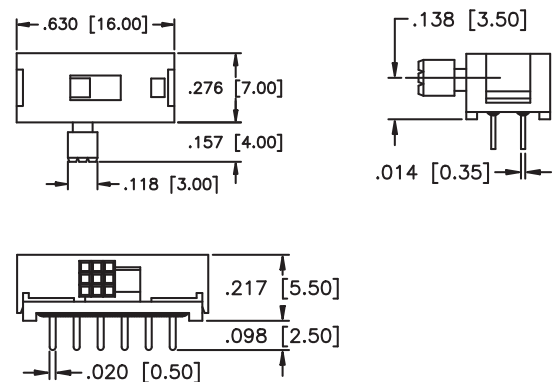
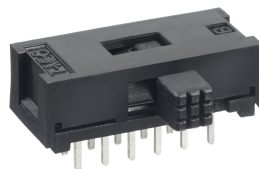
● = COMMON



MMS42R



● = COMMON

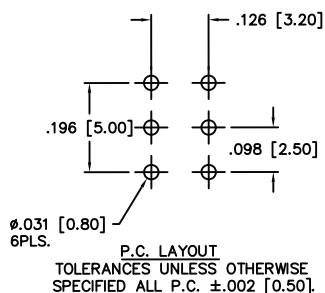


Slide switch series

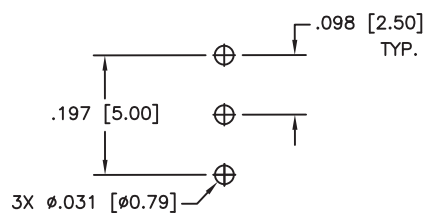
Microminiature slide switches •

 PCB LAYOUT

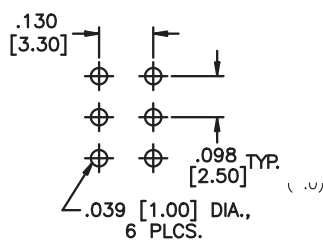
MHSS1104



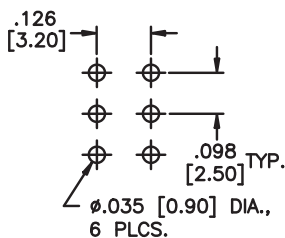
MHSS1105



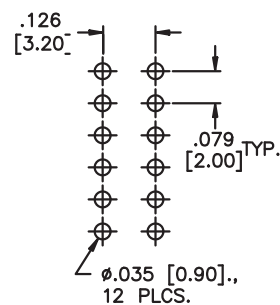
MS22



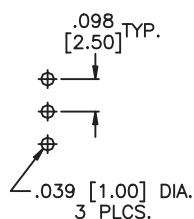
MS22R



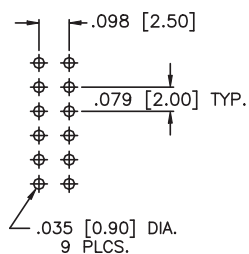
MS42R



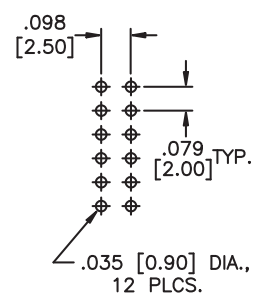
MMS2214



MMS42



MMS42R



Mouser Electronics

Authorized Distributor

Click to View Pricing, Inventory, Delivery & Lifecycle Information:

[Apem:](#)

[MHSS1104A](#) [MHSS1105A](#) [MHSS1104](#) [MHSS1105](#) [MHSS2220](#)