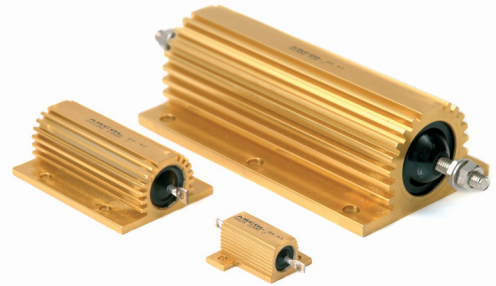


Manufactured in line with the requirements of MIL 18546 and IEC 115, designed for direct heatsink mounting with thermal compound to achieve maximum performance.

- High Power to volume
- Wound to maximise High Pulse Capability
- Values from R005 to 100K
- Custom designs welcome
- RoHS Compliant

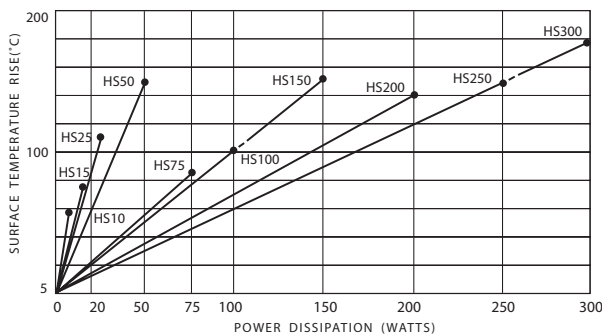


Characteristics

Tolerance (Code):	Standard $\pm 5\%$ (J) and $\pm 10\%$ (K). Also available $\pm 1\%$ (F), $\pm 2\%$ (G) and $\pm 3\%$ (H)
Tolerance for low Ω values:	Typically $\geq R05 \pm 5\% \leq R047 \pm 10\%$
Temperature coefficients:	Typical values $< 1K$ 100ppm Std. $> 1K$ 25ppm Std. For lower TCR's please contact Arcol
Insulation resistance (Dry):	10,000 M Ω minimum
Power dissipation:	At high ambient temperature dissipation derates linearly to zero at 200°C
Ohmic values:	From R005 to 100K depending on wattage size
Low inductive (NHS):	Specify by adding N before HS Series code, e.g. NHS50
NHS ohmic value:	Divide standard HS maximum value by 4
NHS working volts:	Divide standard HS maximum working voltage by 1.414

Temp. Rise & Power Dissipation

Surface temperature of resistor related to power dissipation. The resistor is standard heatsink mounted using a proprietary heatsink compound.



Heat Dissipation

Heat dissipation: Whilst the use of proprietary heat sinks with lower thermal resistances is acceptable, uprating is not recommended. For maximum heat transfer it is recommended that a heat sink compound be applied between the resistor base and heat sink chassis mounting surface. It is essential that the maximum hot spot temperature of 200°C is not exceeded, therefore, the resistor must be mounted on a heat sink of correct thermal resistance for the power being dissipated.

Ordering Procedure

Standard Resistor. To specify standard: Series, Watts, Ohmic Value, Tolerance Code, e.g.: HS25 2R2 J

Non Inductive Resistor. To specify add N, e.g.: NHS100 10R J

ARCOL UK Limited,
Threemilestone Ind. Estate,
Truro, Cornwall, TR4 9LG, UK.
T +44 (0) 1872 277431
F +44 (0) 1872 222002
E sales@arcolresistors.com

www.arcolresistors.com

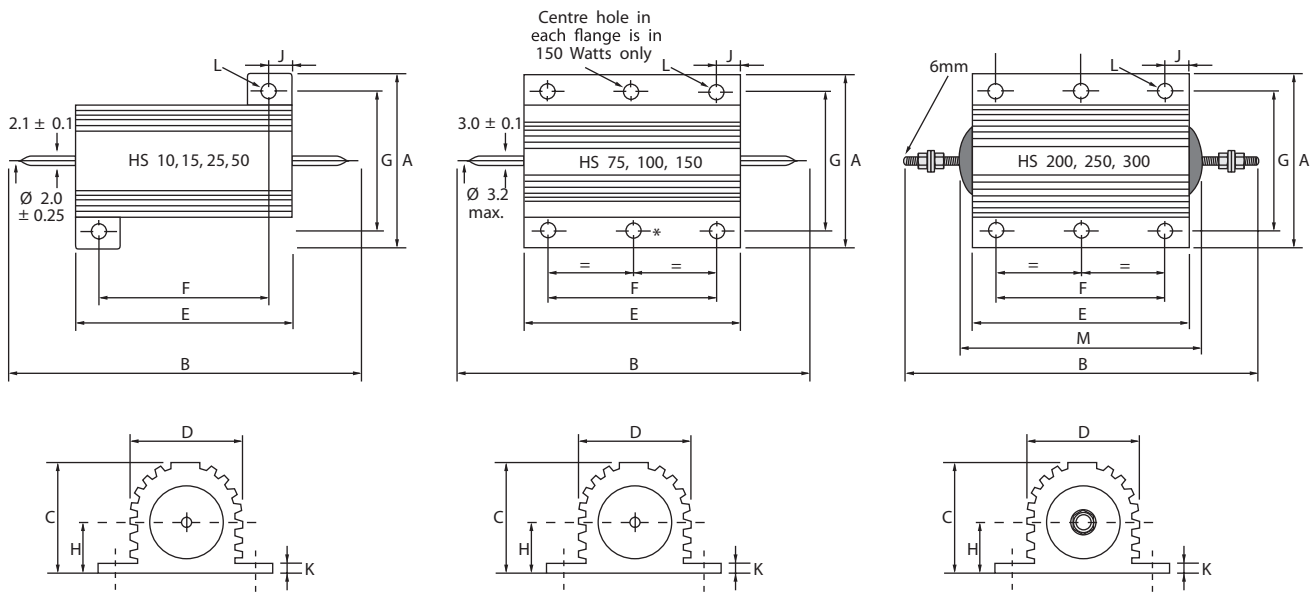
The information contained herein does not form part of a contract and is subject to change without notice. ARCOL operate a policy of continual product development, therefore, specifications may change.

It is the responsibility of the customer to ensure that the component selected from our range is suitable for the intended application. If in doubt please ask ARCOL.

Electrical Specifications

Size	Style MIL-R 18546	Power rating on std. heatsink @25°C	Watts with no heatsink @25°C	Resistance range	Limiting element voltage	Voltage proof AC Peak	Voltage proof AC rms.	Approx weight gms	Typical surface rise HS mounted	Standard heatsink	
										cm ²	Thickness mm
HS10	RE 60	10	5	R005-10K	160	1400	1000	4	5.8	415	1
HS15	RE 65	15	7	R005-10K	265	1400	1000	7	5.1	415	1
HS25	RE 70	25	9	R005-36K	550	3500	2500	14	4.2	535	1
HS50	RE 75	50	14	R01-86K	1250	3500	2500	32	3.0	535	1
HS75		75	24	R01-50K	1400	6363	4500	85	1.1	995	3
HS100		100	30	R01-70K	1900	6363	4500	115	1.0	995	3
HS150		150	45	R01-100K	2500	6363	4500	175	1.0	995	3
HS200		200	50	R01-50K	1900	7070	5000	475	0.7	3750	3
HS250		250	55	R01-50K	2200	7070	5000	600	0.6	4765	3
HS300		300	60	R01-68K	2500	7070	5000	700	0.6	5780	3

HS10-HS300 Standard Resistor



Dimensions (mm)

Size	A Max	B Max	C Max	D Max	E Max	F±0.3	G±0.3	H Max	J Max	K Max	L ±0.25*	M Max
HS10	16.5	30.0	8.8	8.5	15.9	11.3	12.4	4.5	2.4	1.8	2.4	
HS15	21.0	36.5	11.0	11.2	19.9	14.3	15.9	5.5	2.8	1.8	2.4	
HS25	28.0	51.0	14.8	14.2	27.3	18.3	19.8	7.7	5.2	2.6	3.2	
HS50	28.0	72.5	14.8	14.2	49.1	39.7	21.4	8.4	5.2	2.6	3.2	
HS75	47.5	72.0	24.1	27.3	48.7	29.0	37.0	11.8	10.4	3.7	4.4	
HS100	47.5	88.0	24.1	27.3	65.2	35.0	37.0	11.8	15.4	3.7	4.4	
HS150	47.5	121.0	24.1	27.3	97.7	58.0	37.0	11.8	20.4	3.7	4.4	
HS200	72.5	145.7	41.8	45.5	89.7	70.0	57.2	20.5	10.4	5.5	5.1	103.4
HS250	72.5	167.0	41.8	45.5	109.7	89.0	57.2	20.5	10.4	5.5	5.1	122.4
HS300	72.5	184.4	41.8	45.5	127.7	104.0	59.0	20.5	12.4	5.5	6.6	141.4

* HS200-HS300 Watts is ± 0.45

Mouser Electronics

Authorized Distributor

Click to View Pricing, Inventory, Delivery & Lifecycle Information:

Ohmite:

[HS250 50R 1%](#) [HS15 15R 1%](#) [HS15 75R 1%](#) [HS15 680R 1%](#) [HS25 30R 1%](#) [HS25 680R 1%](#) [HS100 4K7 1%](#)
[HS15 220R 1%](#) [HS25 220R 1%](#) [HS300 560R 1%](#) [HS15 330R 1%](#) [HS25 330R 1%](#) [HS100 560R 1%](#) [HS250 4R7 1%](#)
[NHS50 180R 1%](#) [HS200 4R7 1%](#) [HS300 4R7 1%](#) [HS100 4R7 1%](#) [HS200 500R 1%](#) [HS100 500R 1%](#) [HS300 500R 1%](#)
[HS250 500R 1%](#) [HS50 30R 1%](#) [HS150 500R 5%](#) [HS50 100R 1%](#) [HS10 100R 1%](#) [HS50 10K 1%](#) [HS300 5K1 1%](#)
[HS25 7R5 1%](#) [HS15 7R5 1%](#) [HS250 60R 1%](#) [HS250 68R 1%](#) [HS200 0R47 1%](#) [HS100 33R 1%](#) [HS200 33R 1%](#)
[HS200 30R 1%](#) [HS300 30R 1%](#) [HS250 0R47 1%](#) [HS100 30R 1%](#) [HS200 3K 1%](#) [HS100 3K0 1%](#) [HS300 33R 1%](#)
[NHS300 100R 5%](#) [NHS250 100R 1%](#) [HS50 3R3 1%](#) [HS10 3R3 1%](#) [HS250 47R 1%](#) [HS10 3R0 1%](#) [HS50 3R0 1%](#)
[HS250 200R 1%](#) [HS100 20K 1%](#) [HS15 68R 1%](#) [HS300 200R 1%](#) [HS200 200R 1%](#) [HS100 200R 1%](#) [HS10 200R 1%](#)
[NHS300 80R 1%](#) [HS50 200R 1%](#) [HS15 5K0 1%](#) [HS200 5K1 1%](#) [HS250 5K1 1%](#) [HS25 75R 1%](#) [HS50 5K 1%](#)
[HS200 5R0 1%](#) [HS100 5R0 1%](#) [HS300 5R0 1%](#) [HS250 5R0 1%](#) [HS10 7K2 5%](#) [HS50 330R 1%](#) [HS10 330R 1%](#)
[HS250 5K 1%](#) [HS10 8R0 1%](#) [HS250 56R 1%](#) [HS50 8R0 1%](#) [NHS25 40R 1%](#) [HS15 22R 1%](#) [HS15 20R 1%](#) [HS15 25R 1%](#)
[HS10 68R 1%](#) [HS15 250R 1%](#) [HS10 20R 1%](#) [HS10 22R 1%](#) [HS25 250R 1%](#) [NHS150 0R5 5%](#) [HS25 22R 1%](#)
[HS25 20R 1%](#) [NHS300 260R 1%](#) [HS10 75R 1%](#) [HS200 470R 1%](#) [HS100 470R 1%](#) [HS25 20K 1%](#) [HS250 470R 1%](#)
[HS300 470R 1%](#) [NHS200 16R 1%](#) [NHS100 16R 1%](#) [HS15 47R 1%](#) [NHS300 16R 1%](#) [HS200 3R0 1%](#) [HS300 3R0 1%](#)
[HS100 3R3 1%](#)